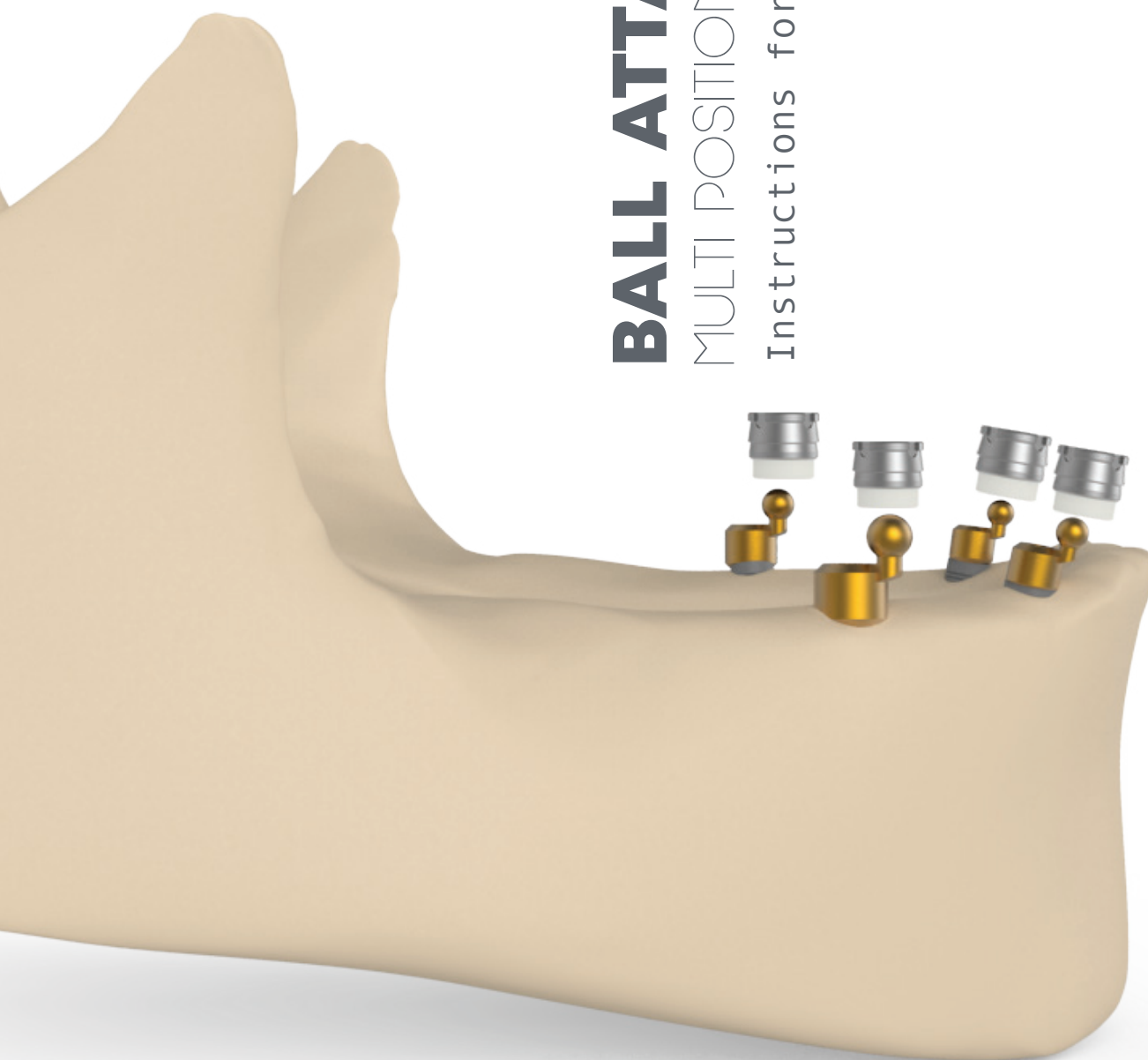


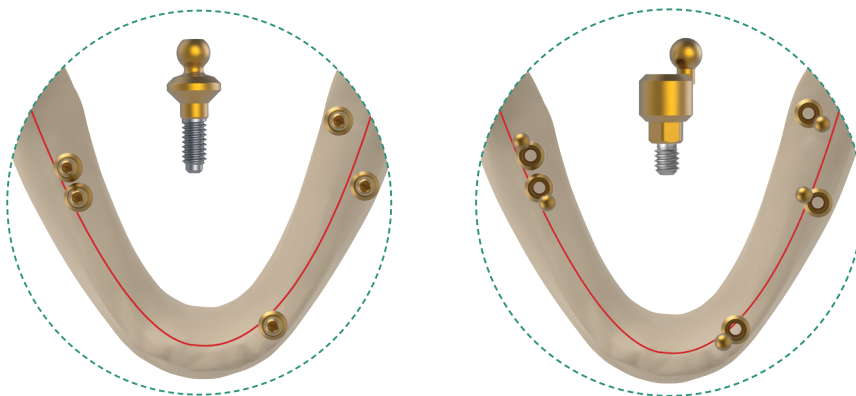
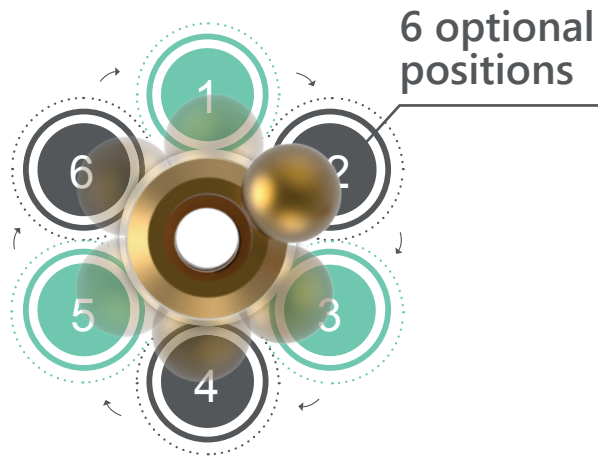
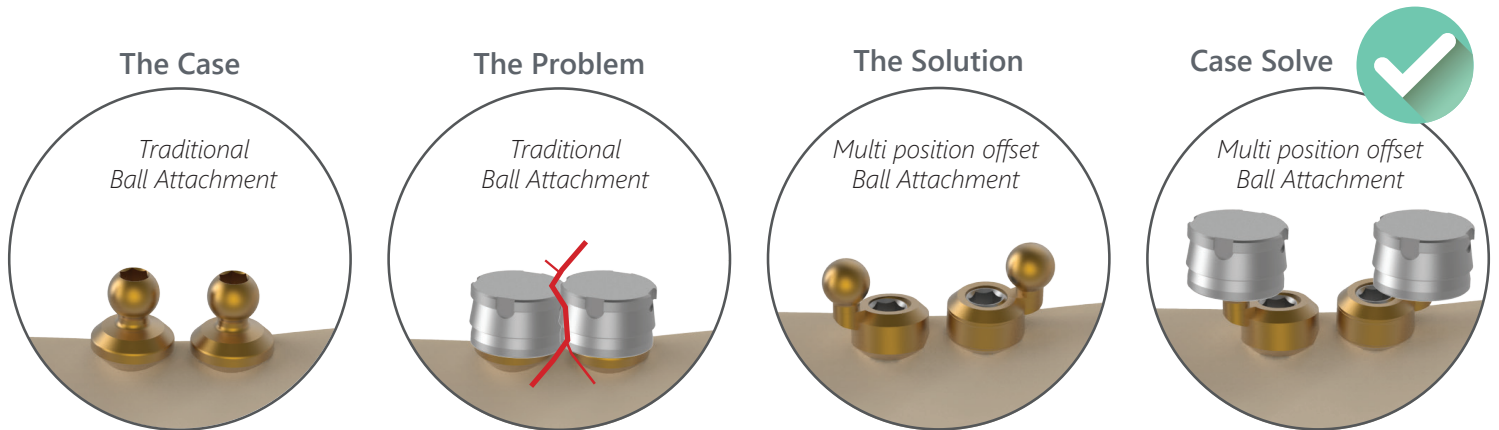
BALL ATTACHMENT

MULTI POSITION OFFSET

Instructions for use

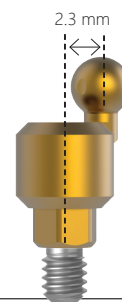


Definition and advantages of the system



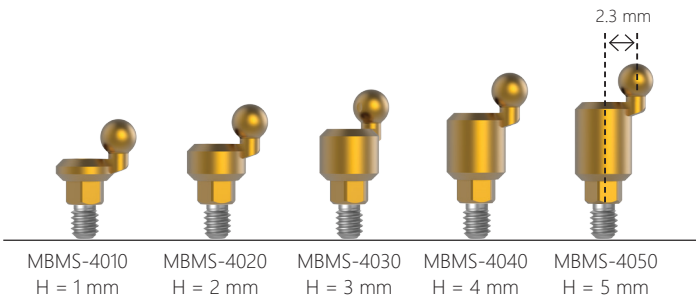
BMS-4010

VS.

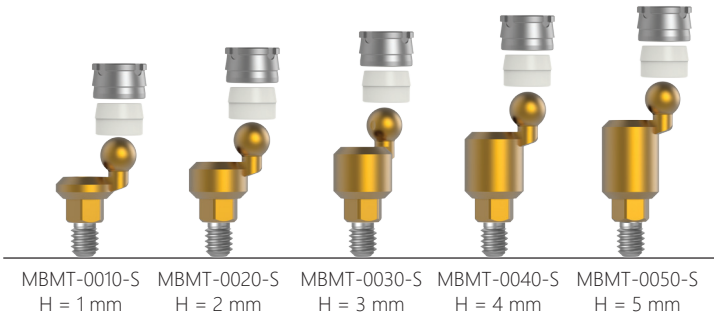


MBMS-4030

STRAIGHT OFFSET BALL ATTACHMENT
Multi position offset BALL ATTACHMENT



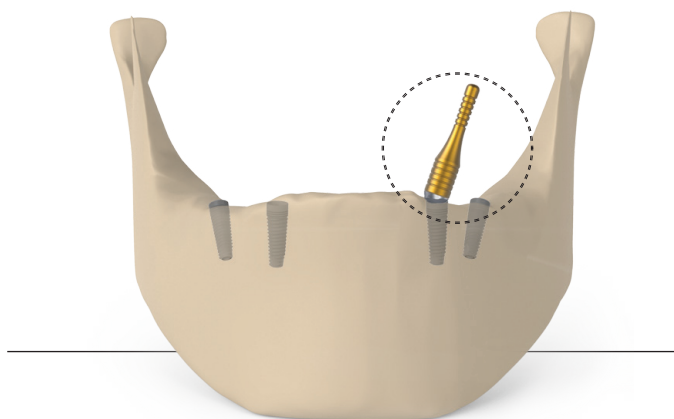
Multi position offset BALL ATTACHMENT - set



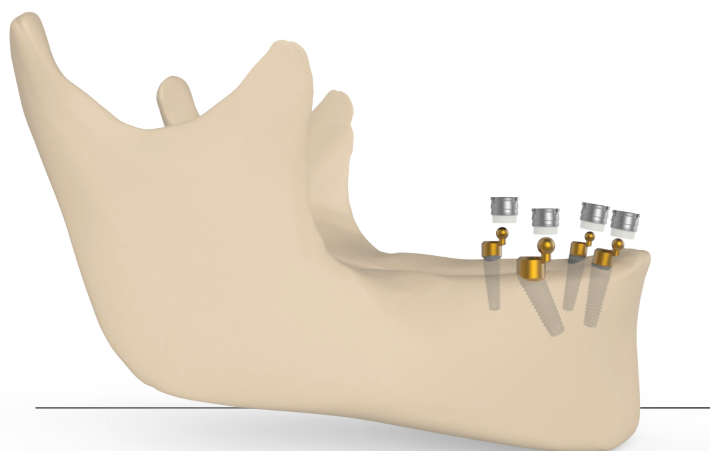
The set includes:



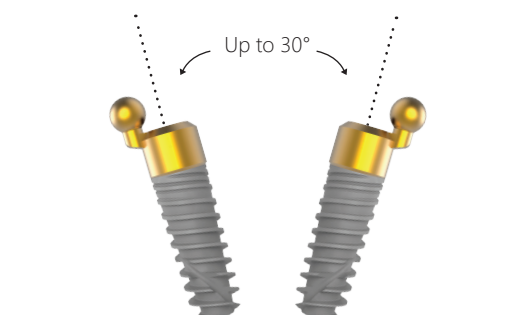
- **ANGLE AND HEIGHT CLIP GAUGE** (Use the Gauge Set for angle and height selection).
In case that the positioning of the implant is more than 18° do not use the system.



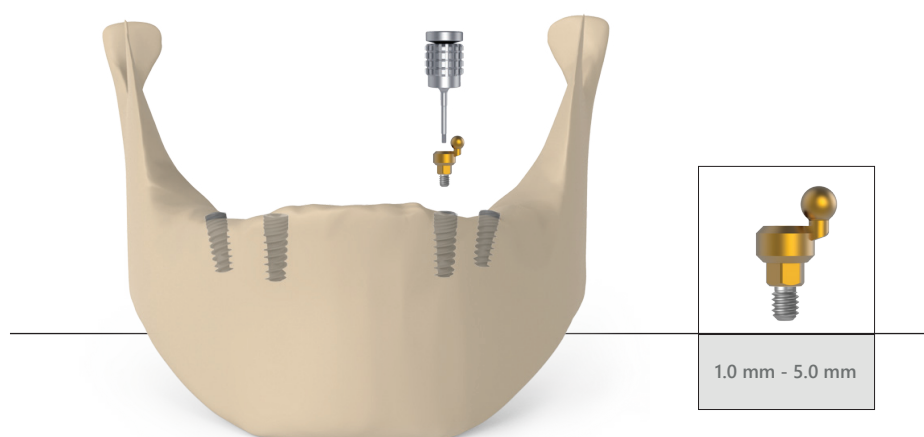
- 1 Wide range of heights: 1 mm up to 5 mm. The availability of these options allows a near-perfect match between the titanium abutment (base) and the denture.



- 2 When mounting the Ball Attachment multi position offset, it is critical to verify up to 15° parallelism between the base abutment.



- For placement of the Ball Attachment multi position offset straight abutment use a standard 1.27 mm hex drive tool.





BALL ATTACHMENT MULTI POSITION OFFSET

Protecting Nylon Sealed Ring (CAT NO: SCH-8540).

should be mounted on the housing slot, along with the BIS-0025.

